

Private Water Well Testing Services

For testing water for Arsenic, Uranium, Chromium, and Selenium,

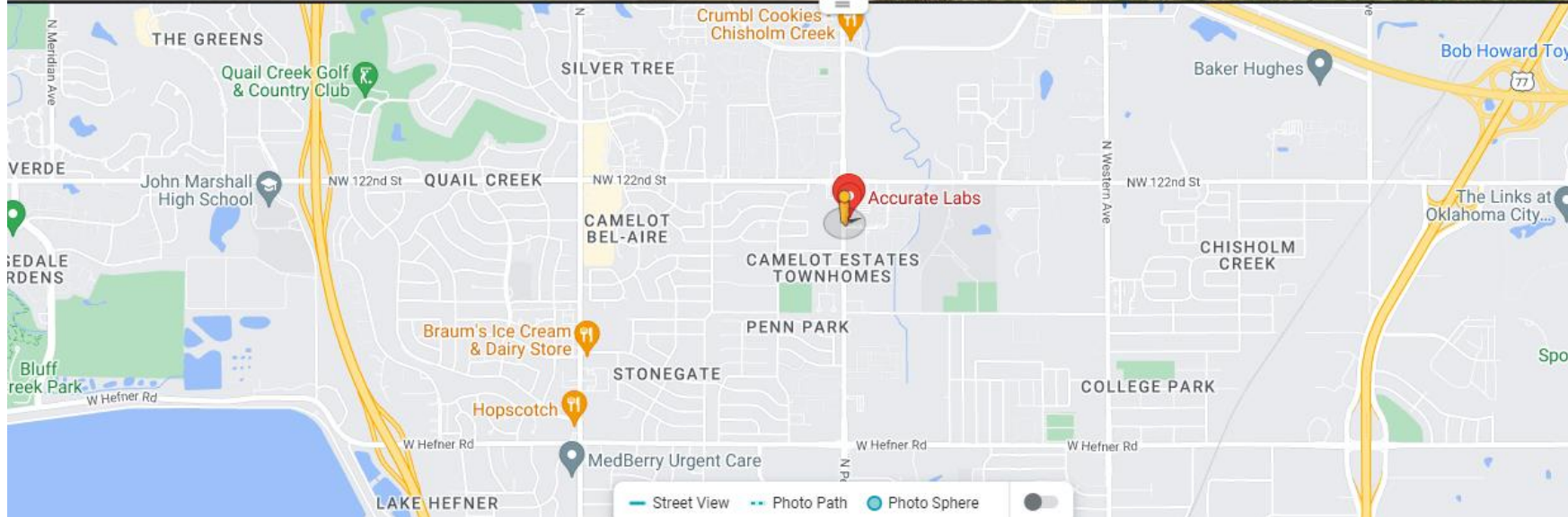
Here are a couple of options:

Oklahoma Department of Environmental Quality

Accurate Labs

as of December 2022

Accurate Labs - 12038 N. Pennsylvania ,OKC

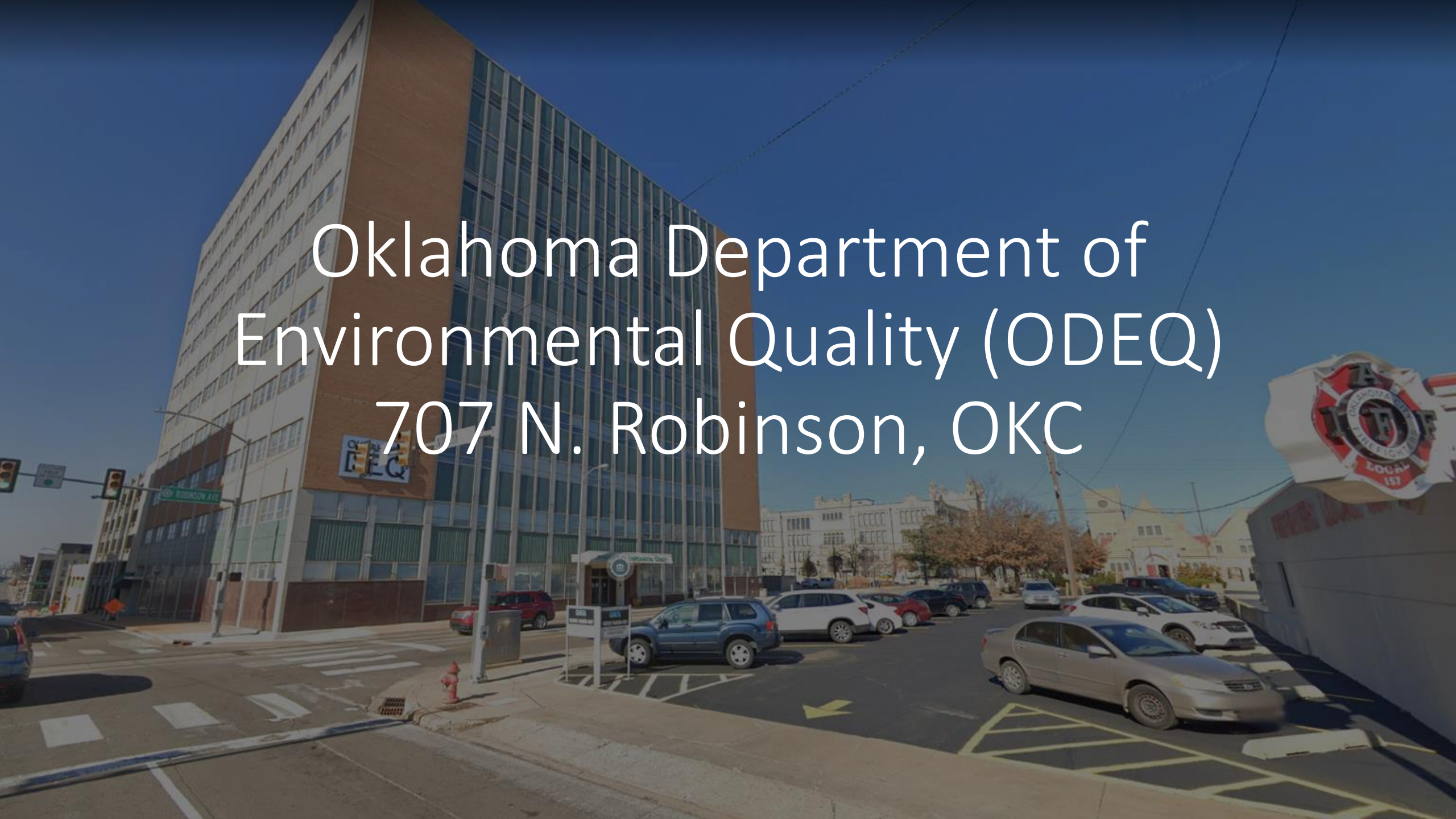


Accurate Labs - 12038 N. Pennsylvania, OKC

Testing details:

- Costs:
 - Uranium - \$40
 - Arsenic - \$35
- Process:
 - Stop by Accurate Labs
 - Pick up sampling supplies for the water test you want
 - No cost
 - Collect your water samples by following instructions
 - Bring the collected samples back to Accurate Labs within 14 days of taking the samples
 - Pay for the tests
 - Receive results within 2 weeks
 - Contacts 405-372-5300 extensions 127 or 113

Oklahoma Department of Environmental Quality (ODEQ) 707 N. Robinson, OKC



Oklahoma Department of Environmental Quality (ODEQ) – 707 N. Robinson, OKC

- ODEQ has informative website on:
 - Private Well Testing:
 - www.deq.ok.gov/wp-content/uploads/deqmainresources/HomeWaterTesting.pdf
 - Contaminants commonly found in the Garber Wellington Aquifer:
 - <http://www.deq.ok.gov/wp-content/uploads/deqmainresources/GarberWellingtonAquifer.pdf>

Oklahoma Department of Environmental Quality (ODEQ) – 707 N. Robinson, OKC

- Costs (updated July 1 each year):
 - Uranium \$27.50
 - Arsenic \$27.50
 - Lead \$27.50
 - Copper \$27.50
- **Garber Wellington aquifer test \$60.00**
 - Tests all four items for one price:
 - Uranium
 - Arsenic
 - Selenium
 - Chromium

Oklahoma Department of Environmental Quality (ODEQ) – 707 N. Robinson, OKC

- Process:
 - Call them at:
405-702-1000 and select option #2.
 - State you would like to test your home's water well (i.e., private well).
 - They will take down your basic information (name, mailing address, etc.).
 - They can mail the necessary sampling bottles and instructions, or you can drop by their offices.
 - Based on your location, they likely will suggest the Garber Wellington aquifer test
 - Collect your water sample as per the instructions and bring to the ODEQ main 10-story building to drop of the samples and arrange payment.
- **NOTE:** ODEQ has no jurisdiction over your private well. They only provide a testing service to inform if there is a problem with your water.
- **NOTE:** if the results exceed the EPA's Maximum Contaminant Level (MCL) for the specific tested item, ODEQ may bring this to your attention. However, what happens after the results are delivered is totally dependent on the homeowner.

- If you visit their offices for picking up or dropping off water samples, use the side entrance located on the northeast corner of the ODEQ main 10-story building.
- Free ODEQ public parking is located directly east of their main building.

